

TABLE #1 SIGNAL HEADS				
SIGNAL FACE NO.	NUMBER & TYPE	MOUNTING	VISOR	BACK-PLATE
2 3 6 9 10 12 13	7-WAY 3SEC(S-6)	MASTARM	V-1	B-1
1 5 8	3-WAY 3SEC(S-9)	MASTARM	V-1	B-1
4 7 11	3-WAY 5SEC(S-19R)	MASTARM	V-1	B-2

TABLE #2 MAST ARMS AND POLES			
LOCATION	TYPE	MAST ARMS DESCRIPTION	FOOTING
POLE 'B'	32' MTG. HT.	65' TS & 10' LMA (G.STL.)	
POLE 'C'		35' TS (G.STL.)	S-35
POLE 'D'		65' TS (G.STL.)	
POLE 'E'	32' MTG. HT.	65' TS & 10' LMA (G.STL.)	

REV. NO.	DESCRIPTION	REVISIONS	DATE

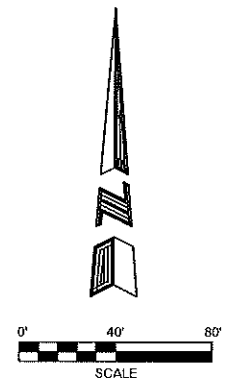
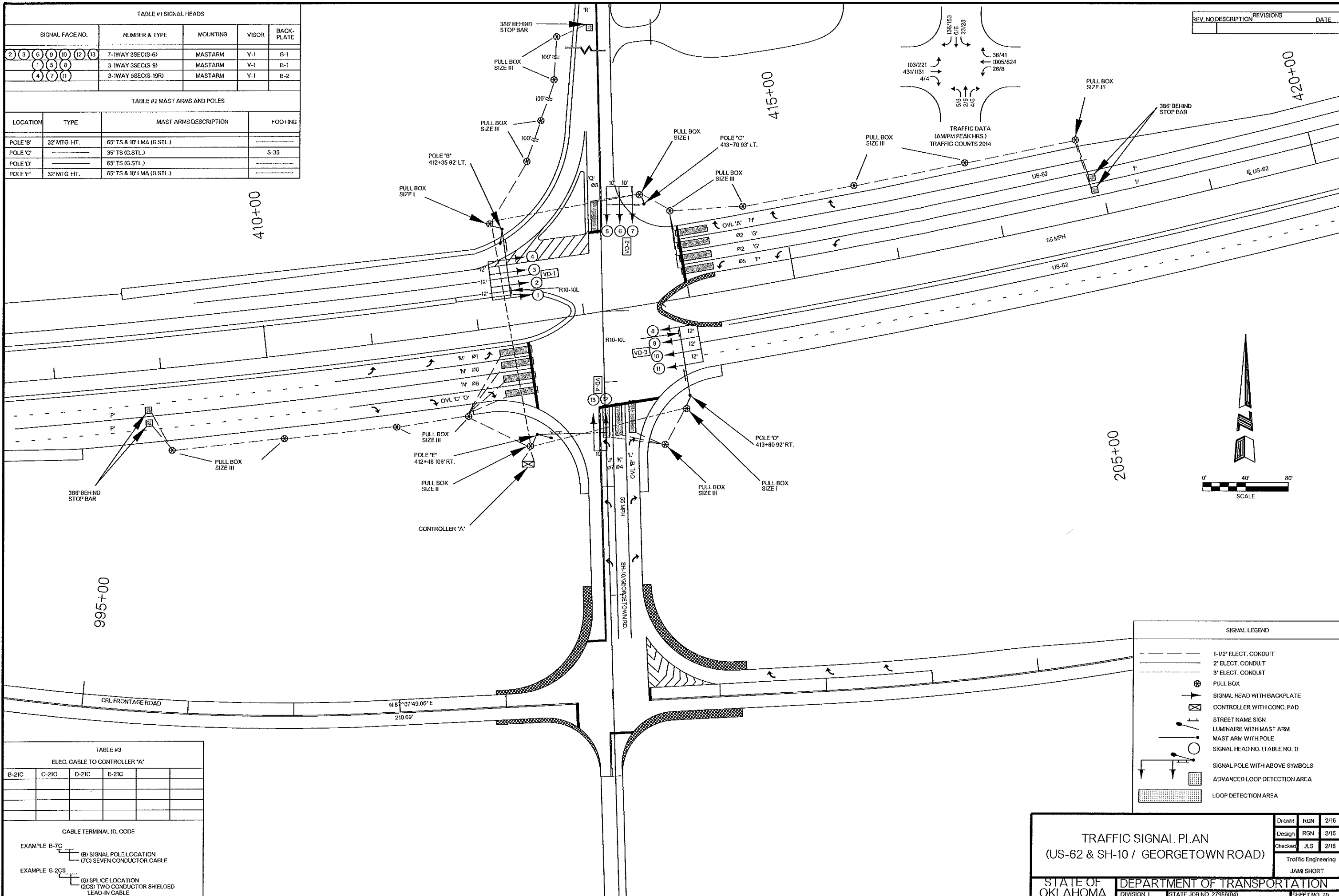


TABLE #3				
ELEC. CABLE TO CONTROLLER 'A'				
B-21C	C-21C	D-21C	E-21C	

CABLE TERMINAL ID. CODE

EXAMPLE B-7C (B) SIGNAL POLE LOCATION (7C) SEVEN CONDUCTOR CABLE

EXAMPLE G-2CS (G) SPLICE LOCATION (2CS) TWO CONDUCTOR SHIELDED LEAD-IN CABLE

SIGNAL LEGEND	
	1-1/2" ELECT. CONDUIT
	2" ELECT. CONDUIT
	3" ELECT. CONDUIT
	PULL BOX
	SIGNAL HEAD WITH BACKPLATE
	CONTROLLER WITH CONC. PAD
	STREET NAME SIGN
	LUMINAIRE WITH MAST ARM
	MAST ARM WITH POLE
	SIGNAL HEAD NO. (TABLE NO. 1)
	SIGNAL POLE WITH ABOVE SYMBOLS
	ADVANCED LOOP DETECTION AREA
	LOOP DETECTION AREA

**TRAFFIC SIGNAL PLAN**  
(US-62 & SH-10 / GEORGETOWN ROAD)

Drawn	RGN	2/16
Design	RGN	2/16
Checked	JLS	2/16

Traffic Engineering  
JAMI SHORT

STATE OF OKLAHOMA	DEPARTMENT OF TRANSPORTATION
DIVISION 1	STATE JOB NO. 27958(04)
	SHEET NO. 70

MUSKOGEE COUNTY US-62